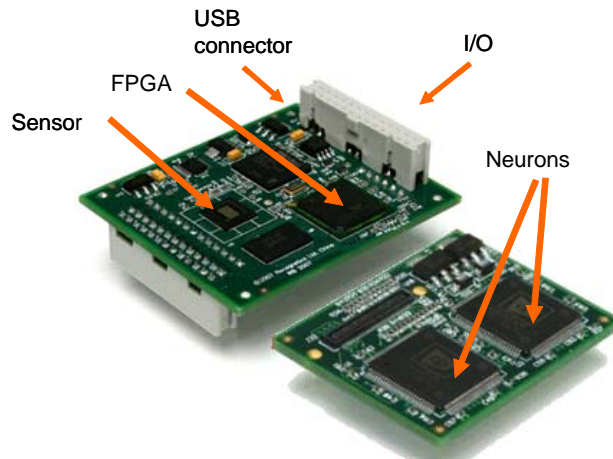


CM-EB and CM-IR Quick Start Guide



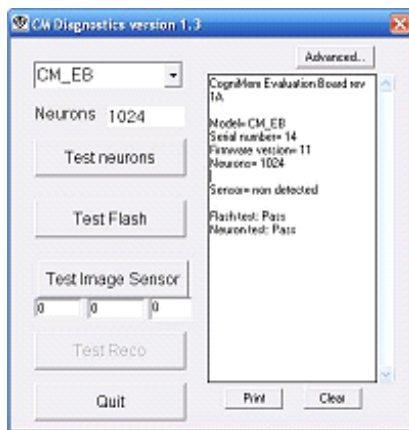
Package contents

- 1 CM-EB or CM-IR board
- 1 CME1K or CME2K module
- USB cable High Speed Certified
- CD with driver, SDK and demos

Install USB driver

- Connect the board to the PC with the USB cable
- Windows will detect the new device and ask you to install a driver. Select miusb2.inf supplied in the USB driver folder of the CD.

Install Diagnostics



- Install the Diagnostics utility supplied on the CD and launch the application
- Select the appropriate board model in the top drop-down box
- Verify that the proper number of neurons is detected
- Test each function of the board by clicking each test button in sequence from top to bottom. Results are reported in the text box to the right
- If all tests pass, quit the application
- The Advanced button should only be clicked if a test fails and you need to call for technical support

3) Install the program of your choice from CD

Open the Getting Started.htm from the CD to browse the list of utilities, demonstration and documentation supplied with the board.

If you are using CM-IR or CM-EB connected to a video sensor, we recommend that you install **Easy_Video_Trainer** and follow the directions described in the Easy_Trainer_QuickStart guide. In the case of a CM-EB, make sure to copy the sensor_data.ini file generated by the Diagnostics utility into the same folder as the Easy_Video_Trainer.exe so the application can read the specifications of our sensor.

Do not forget to register your product with Recognetics at <http://www.recognetics.com/support.html>. This will just take a few minutes of your time and ensure that you receive updates and product news automatically.